



Clover Portfolio





Clover Industrial Co., Ltd, founded in 1999, is a professional manufacturer engaged in the Design and Production of tablet PC, Laptop, Digital Signage, etc. Under the powerful background of design and development capabilities, we take “Personality, Fashion and Leading” as product development strategy. According to ISO9001 operation system, we strictly control the product quality from incoming materials to finished products with various testing equipments. we are also BSCI certified factory. Most of our products have passed CE, FCC, ROHS, REACH, KC and other related certifications. Up to now, we have established long-term good cooperation relationship with many well-known brands and enterprises in many countries and regions.

Type: ODM & SI

Market: Europe/US/LAR/Asia

Focus: Consumer, IOT, EDU

Contact: [janny@cloverindustrial.com](mailto:janny@cloverindustrial.com)

Employees: 300 in mfg, 8 designers, 20+ engineers, etc

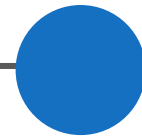
History:

Founded for MP4 player

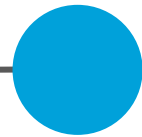
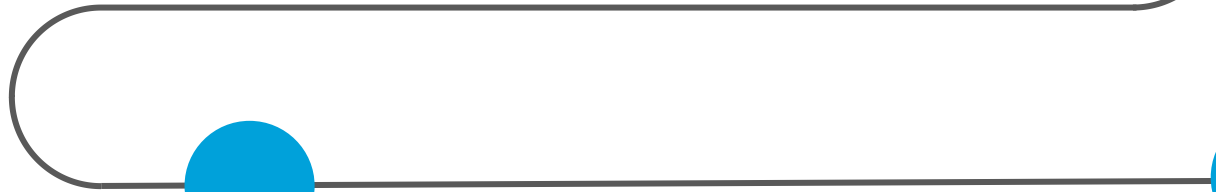


1999

Started Tablet PC

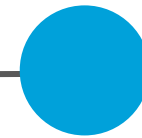


2009



2013

Started Intel inside Tablets



2014

Embedded Windows OS

Capability:

300 Employees

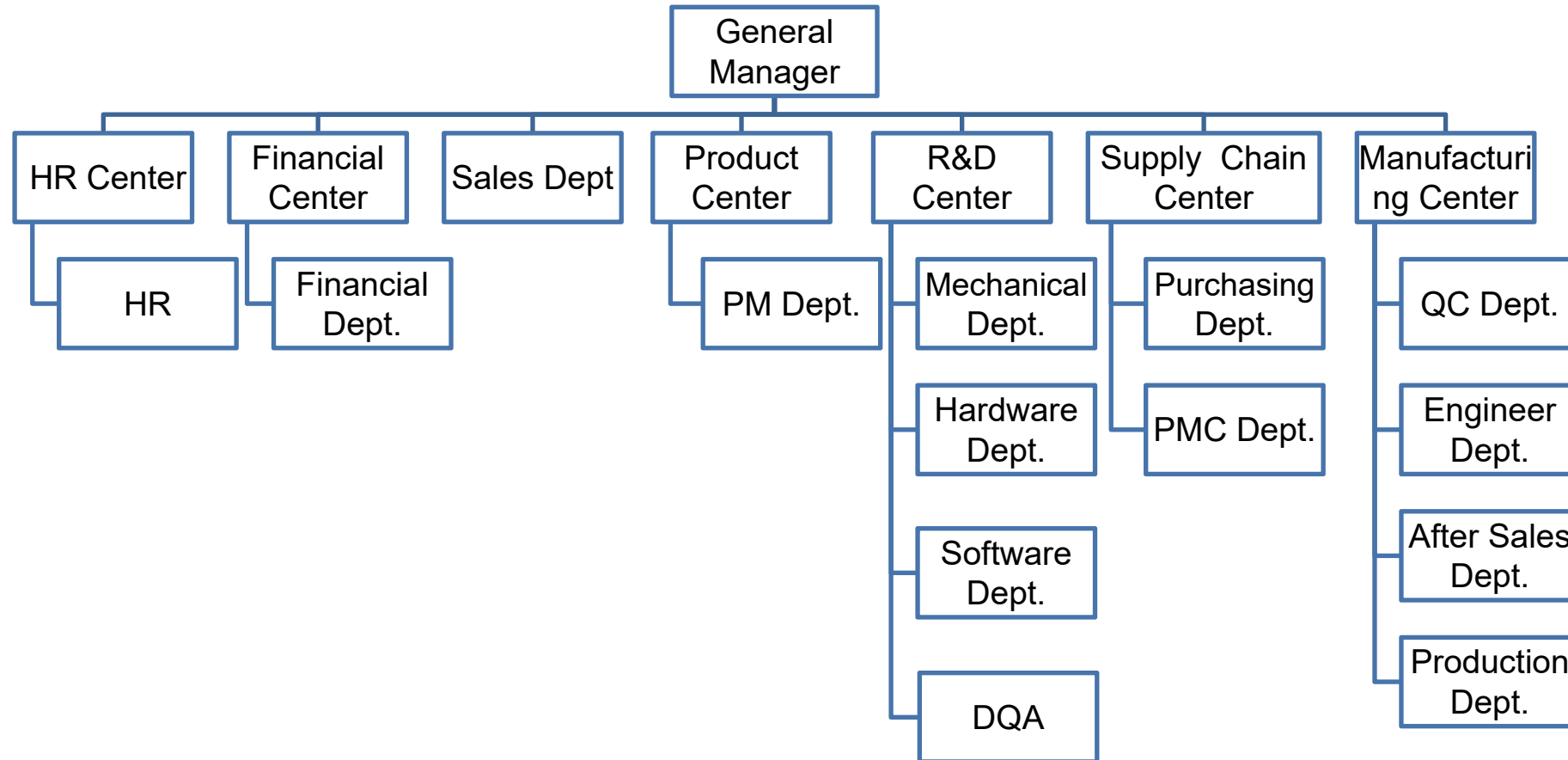
200K Capacity

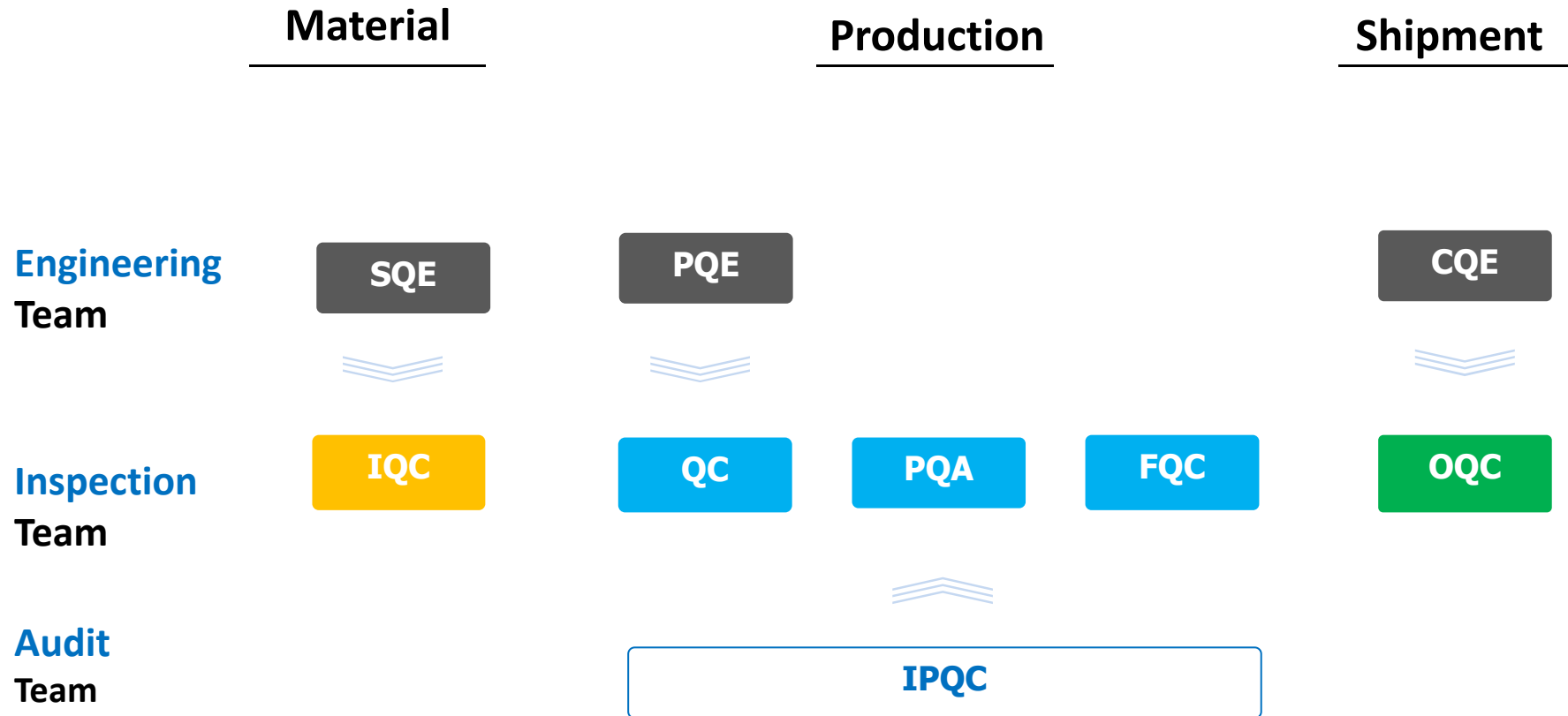
R&D Team with 20+ members



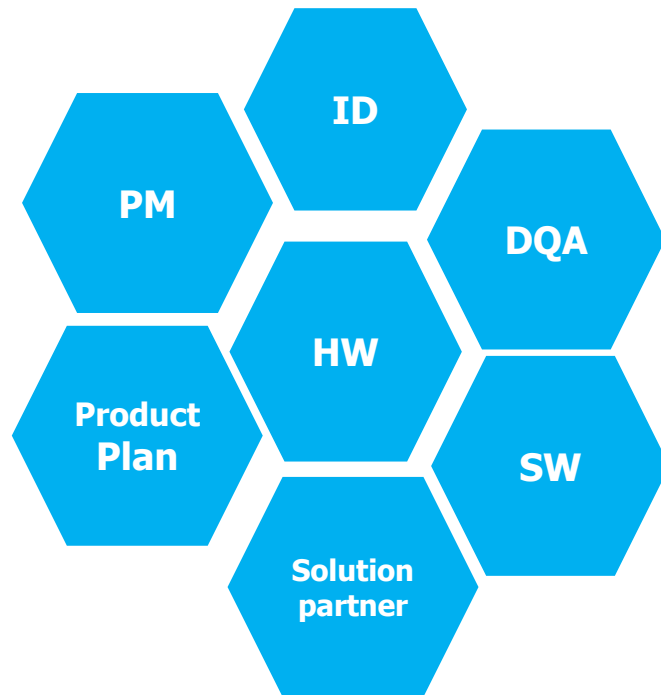
# Certificates & Awards







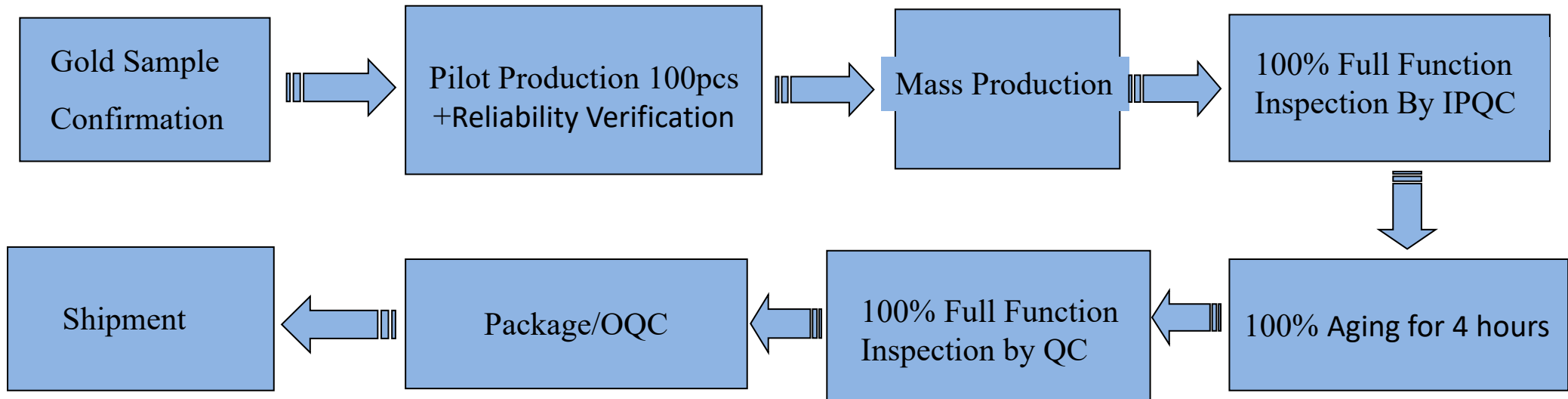




**20+** Staff

- ▶ Product Spec Definition
- ▶ HW/ID/SW Design
- ▶ Product Performance & Reliability verification
- ▶ Product Certification

Manufacturing Execution system tracks the transformation of raw materials to finished products in real time. It improves the productivity, operation traceability and reduces the waste.



- \* Enterprise Resource Planning system is applied
- \* Follow FIFO rule to distribute materials
- \* Separate high value materials warehouse equipped with temperature and humidity control
- \* Clear mark to differ semi-product warehouse, non-conforming area, inspection waiting area, qualified zone

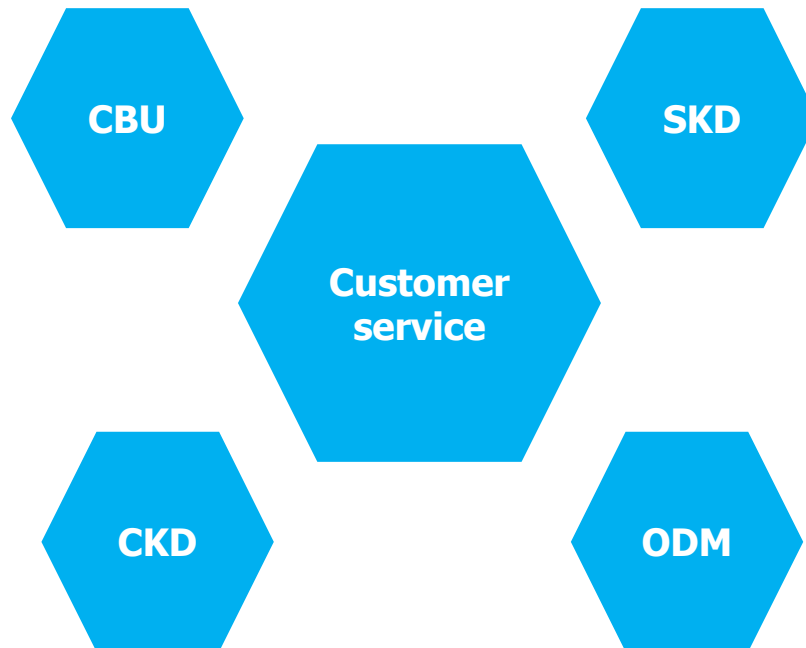


ESD control program monitors, maintains and improves the whole plant ESD environment. To prevent ESDS objects in assembly, package, test or other operation activities from damage. All production equipment must be grounded; All workers must wear electrostatic clothing, caps, rings and use proper ESD tools before touching sensitive components.



Various reliability tests will be done before new product launching and new production proceeding, which includes but not limited to low & high temperature/humidity test, battery capacity & charging curve test, vibration test, strength test, hinge tilt operation test, etc.





- Compliant to CE/FCC/KC/BIS standard
- Understand LOEM's demand
- Follow detailed instruction
- Familiar to SKD/CKD process
- Capable to provide proper SOP
- Provide technical support
- Launch ready-for-sale product from the emergency of first concept
- Creative design instead of open mold

**2.0KK** /year

---

**5**

Production Lines

**120**

U.P.H/line

**10**

Work time/day

**24**

Work day/month





# K148-Private Design

## 14.1" 360 Degree Rotation Laptop

With Newest 10th Gen Core I7/I5/I3 Processor



Tablet mode



Compact mode



Laptop mode



Stand mode









Bracket mode





**G138**-Private Design  
**6 Usage Modes**  
**360-Degree Convertible**

-  Tablet
-  Portable
-  Drawing
-  Laptop
-  Stand
-  Tent



## EDU116

360 Degree Convertible Education Notebook  
IP54 Standard Super Protected Casing  
200cc Water Resistant Keyboard  
70cm Drop Test Pass



**G139**-Private Design  
FullView Thin and Light Notebook



**K149**-Private Design

# 14.1" Slim and Light-weight Laptop

With Newest 10th Gen Core I7/I5/I3 Processor



## Windows 2IN1 series

# R108



*Private design for Education!*

## Product Specification

CPU	RK3368H octa core
Dimensions(mm)	【Width 265.7/ Depth 178.7/ Height 11.6(mm) / Weight 0.72(kg)】
LCD	10.1'' 800*1280 IPS
Memory/Storage	DDR up to 2G,,flash up to 128G
Type of TP	Gorilla TP
Wireless LAN	802.11 B/G/N or AC
I/O Ports	1*Earphone 3.5mm, 1* DC charging, 1* HDMI 1*standard USB Interface.1*Micro 5 pin
Camera	2.0M/5.0M
Battery& AC Adaptor	3.8V 8600mAh Battery, 5V/2.5A AC Adaptor
Selling point	<b>IP52 standard,70cm drop test pass, hard keyboard</b>
Price	<b>TBD</b>

## A105YD



### Product Specification

CPU	Intel Celeron Apollo lake/Gemini lake
Dimensions(mm)	【Width 260/ Depth 171/ Height 10(mm) / Weight 0.59(kg)】
LCD	10.1'' 800*1280 IPS
Memory/Storage	DDR up to 4G ,flash up to 128G
Type of TP	P+G
Wireless LAN	802.11 B/G/N or AC
I/O Ports	1*Earphone 3.5mm, 1* DC charging, 1* HDMI 1*standard USB Interface.1*Micro 5 pin
Camera	2.0M/2.0M
Battery& AC Adaptor	7.6V 3000mAh Battery,12V/2.5A AC Adaptor
Selling point	2in1 Tablets,Hard keyboard &soft keyboard optional
Price	<b>TBD</b>



# Windows Yoga series

# A117



## Product Specification

CPU	Intel Apollo lake /Gemini lake optional
Dimensions(mm)	【Width 277.2/ Depth 189.5/ Height 19.2mm) / Weight 1.12(kg)】
LCD	11.6'' TN 1366*768 /FHD IPS 1920x1080
Memory/Storage	DDR up to 8G ,flash up to 128G
Type of TP	G+FF
Wireless LAN	802.11 B/G/N or AC
I/O Ports	1*Earphone 3.5mm,1* DC charging,1* HDMI, 2*standard USB Interface 1*Micro SD,1*RJ45 optional
Camera	Front 0.3M or 2.0M
Battery& AC Adaptor	7.6V 4500mAh Battery, 12V/2A AC Adaptor
Selling point	<b>Narrow bezel,slim design,YOGA</b>
Price	<b>TBD</b>

## EDU116



***Education notebook!***

### Product Specification

CPU	Intel Apollo lake /Gemini lake optional
Dimensions(mm)	【Width 290/ Depth 204/ Height 21.6(mm) / Weight 1.29(kg)】
LCD	11.6'' 1920x1080 FHD IPS
Memory/Storage	DDR up to 8G ,flash up to 128G
Type of TP	G+FF
Wireless LAN	802.11 B/G/N or AC
I/O Ports	1*Earphone 3.5mm,1* DC charging,1* HDMI, 2*standard USB Interface 1*Micro SD,1*RJ45 optional
Camera	Rotating 2.0M
Battery& AC Adaptor	7.6V 5000mAh Battery, 12V/2A AC Adaptor
Selling point	<b>75cm drop test passed ,IP54 standard 100cm water resistance,Active stylus,YOGA</b>
Price	<b>TBD</b>

# G138



*Private design!*

## Product Specification

CPU	Intel Gemini lake N4000/N4100/N5000
Dimensions(mm)	【Width 307.5 / Depth 209/ Height 14.7(mm) / Weight 1.25(kg)】
LCD	13.3'' 1920x1080 FHD IPS
Memory/Storage	DDR up to 8G,storage up to 128G
Type of TP	G+FF
Wireless LAN	802.11 B/G/N or AC
I/O Ports	1*Earphone 3.5mm, 1* DC charging, 1* HDMI 2* type C ,1*Micro SD
Camera	Front 1.0M
Battery& AC Adaptor	7.6V 5000mAh Battery, 12V/2A AC Adaptor
Selling point	<b>Full size keyboard/Narrow bezel /Modern PC/Yoga</b>
Price	<b>\$178 with N4000,4G+64G</b>

## G148



*Private design!*

### Product Specification

CPU	Intel Gemini lake N4000/N4100/N5000
Dimensions(mm)	【Width 322.5 / Depth 217.8/ Height 13.7(mm) / Weight 1.28(kg)】
LCD	14.1'' 1920x1080 FHD IPS
Memory/Storage	DDR up to 8G,storage up to 128G
Type of TP	G+FF
Wireless LAN	802.11 B/G/N or AC
I/O Ports	1*Earphone 3.5mm, 1* DC charging, 1* HDMI 2* type C ,1*Micro SD
Camera	Front 2.0M
Battery& AC Adaptor	7.6V 5000mAh Battery, 12V/2A AC Adaptor
Selling point	<b>Full size keyboard/Narrow bezel /Modern PC/Yoga</b>
Price	<b>TBD</b>

# K148



*Private design!*

## Product Specification

CPU	Intel Icelake 10th I3-1005G1/I5/I7
Dimensions(mm)	【Width 322.5 / Depth 217.8/ Height 13.7(mm) / Weight 1.28(kg)】
LCD	14.1'' 1920x1080 FHD IPS
Memory/Storage	DDR up to 8G,storage up to 128G
Type of TP	G+FF
Wireless LAN	802.11 B/G/N or AC
I/O Ports	1*Earphone 3.5mm, 1* DC charging, 1* HDMI 2* type C ,1*Micro SD
Camera	Front 2.0M
Battery& AC Adaptor	7.6V 6000mAh Battery, 19V/2A AC Adaptor
Selling point	<b>Full size keyboard/Narrow bezel /Modern PC/Yoga</b>
Price	<b>TBD</b>

# Windows Notebook Series

# G116



***Education notebook!***

## Product Specification

CPU	Intel Apollo lake /Gemini lake optional
Dimensions(mm)	【Width 276.6/ Depth 190.4/ Height 18.3mm) / Weight 1.12(kg)】
LCD	11.6'' TN 1366*768 /FHD IPS 1920x1080
Memory/Storage	DDR up to 8G,flash up to 128G
Type of TP	N/A
Wireless LAN	802.11 B/G/N or AC
I/O Ports	1*Earphone 3.5mm,1* DC charging,1* HDMI, 2*standard USB Interface 1*Micro SD,1*RJ45 optional
Camera	Front 0.3M or 2.0M
Battery& AC Adaptor	7.6V 5500mAh Battery, 12V/2A AC Adaptor
Selling point	<b>Narrow bezel,slim design</b>
Price	<b>TBD</b>



## G1163



### Product Specification

CPU	Intel Apollo lake/Gemini lake optional
Dimensions(mm)	【Width 282 / Depth 195/ Height 18(mm) / Weight 1.16(kg)】
LCD	11.6'' TN1366*768 or FHD IPS 1920x1080
Memory/Storage	DDR up to 8G,flash up to 128G
Type of TP	Optional
Wireless LAN/BT	802.11 B/G/N or AC
I/O Ports	1*Earphone 3.5mm,1* DC charging,1* HDMI 1* type C optional,2*standard USB ,1*Micro SD
Camera	Front 0.3M/2.0M
Battery& AC Adaptor	7.6V 4800mAh Battery,12V/2A AC Adaptor
Selling point	<b>Full size keyboard/HDD or M.2 SSD support</b>
Price	<b>TBD</b>

# G131



## Product Specification

CPU	Intel Apollo lake/Gemini lake optional
Dimensions(mm)	【Width 317 / Depth 215/ Height 18(mm) / Weight 1.34(kg)】
LCD	13.3'' 1920x1080 FHD IPS
Memory/Storage	DDR up to 8G,flash up to 128G
Type of TP	Optional
Wireless LAN/BT	802.11 B/G/N or AC
I/O Ports	1*Earphone 3.5mm,1* DC charging,1* HDMI 1* type C optional,2*standard USB ,1*Micro SD
Camera	Front 0.3M/2.0M
Battery& AC Adaptor	7.6V 4000mAh Battery,12V/2A AC Adaptor
Selling point	<b>Full size keyboard/HDD or M.2 SSD support</b>
Price	<b>TBD</b>

## G139



*Private design!*

### Product Specification

CPU	Intel Apollo lake/Gemini lake optional
Dimensions(mm)	【Width 308.5 / Depth 209/ Height 15.5(mm) / Weight 1.25(kg)】
LCD	13.3'' 1920x1080 FHD IPS
Memory/Storage	DDR up to 8G ,flash up to 128G
Type of TP	Glass & TP optional
Wireless LAN	802.11 B/G/N or AC
I/O Ports	1*Earphone 3.5mm, 1* DC charging, 1* HDMI 1* type C optional, 2*standard USB Interface 1*Micro SD
Camera	Front 2M
Battery& AC Adaptor	7.6V 5000mAh Battery,12V/2A AC Adaptor
Selling point	<b>Private design/ full size keyboard/Narrow bezel</b>
Price	<b>TBD</b>

# A142



## Product Specification

CPU	Intel Apollo lake/Gemini lake optional
Dimensions(mm)	【Width 330 / Depth 222/ Height 23(mm) / Weight 1.4kgs】
LCD	14.1'' TN,IPS optional
Memory/Storage	DDR up to 4G ,flash up to 128G
Type of TP	N/A
Wireless LAN	802.11 B/G/N or AC
I/O Ports	1*Earphone 3.5mm, 1* DC charging, 1* HDMI,2*standard USB Interface 1*Micro SD Scket
Camera	Front 0.3M
Battery& AC Adaptor	7.6V 4600mAh Battery, 12V/2A AC Adaptor
Selling point	<b>HDD support optional</b>
Price	<b>TBD</b>

# G143



## Product Specification

CPU	Intel Apollo lake/Gemini lake optional
Dimensions(mm)	【Width 332.6 / Depth 223.6/ Height 18(mm) / Weight 1.4(kg)】
LCD	14.1'' TN 1366*768/FHD IPS 1920*1080 optional
Memory/Storage	DDR up to 8G,flash up to 128G
Type of TP	Optional
Wireless LAN	802.11 B/G/N or AC
I/O Ports	1*Earphone 3.5mm, 1* DC charging, 1* Micro HDMI, 2*standard USB 3.0, 1*Micro SD , 1* type C optional
Camera	Front 0.3 or 2M
Battery& AC Adaptor	7.6V 4600mAh Battery, 12V/2.1A AC Adaptor
Selling point	<b>HDD/M.2 SSD support, full size keyboard</b>
Price	<b>TBD</b>

# G149



***Private design!***

## Product Specification

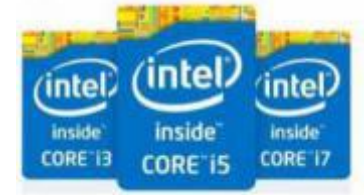
CPU	Intel Apollo lake/Gemini lake optional
Dimensions(mm)	【Width 324.5 / Depth 219/ Height 16.5(mm) / Weight 1.3(kg)】
LCD	14.1” 1920x1080 FHD IPS
Memory/Storage	DDR up to 8G ,flash up to 128G
Type of TP	N/A
Wireless LAN	802.11 B/G/N or AC
I/O Ports	1*Earphone 3.5mm, 1* DC charging, 1* HDMI 1* type C optional, 2*standard USB Interface 1*Micro SD
Camera	Front 2M
Battery& AC Adaptor	7.6V 5000mAh Battery,12V/2A AC Adaptor
Selling point	<b>Full size keyboard/Narrow bezel/A case metal</b>
Price	<b>TBD</b>

# G151



## Product Specification

CPU	Intel Apollo lake/Gemini lake optional
Dimensions(mm)	【Width 374 / Depth 243/ Height 23(mm) / Weight 1.45(kg)】
LCD	15.6'' FHD 1920*1080
Memory/Storage	DDR up to 8G,storage up to 512G
Type of TP	Optional
Wireless LAN	802.11 B/G/N or AC
I/O Ports	1*Earphone 3.5mm, 1* DC charging, 1* Micro HDMI, 2*standard USB 3.0, 1*Micro SD , 1* type C optional,1*RJ45 optional
Camera	Front 0.3 or 2M
Battery& AC Adaptor	7.6V 5000mAh Battery, 12V/2A AC Adaptor
Selling point	<b>HDD/M.2 SSD support, with Fan, full size keyboard</b>
Price	<b>\$125 with N3350,4G/64G</b>



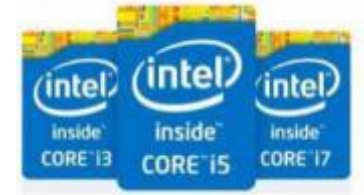
I143



### Product Specification

CPU	Intel core Ice lake /comet lake I3/I5/I7
Dimensions(mm)	【Width 332.5/ Depth 223.5/ Height 21.5(mm) / Weight 1.45(kg)】
LCD	14.1" TN 1366*768 /FHD IPS 1920*1080
Memory/Storage	DDR up to 16G,storage up to 512G
Type of TP	Optional
Wireless LAN	802.11 B/G/N or AC
I/O Ports	1*Earphone 3.5mm, 1* DC charging, 1* Micro HDMI, 2*standard USB 3.0, 1*Micro SD , 1* type C optional
Camera	Front 0.3 or 2M
Battery& AC Adaptor	7.6V 5000mAh Battery, 19V/3A AC Adaptor
Selling point	<b>HDD/M.2 SSD support, with Fan, 4G LTE optional</b>
Price	<b>TBD</b>





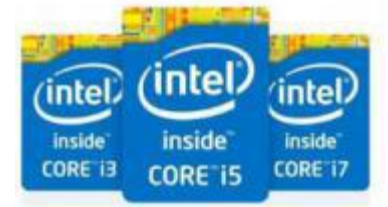
## Product Specification

I149



*Private design!*

CPU	Intel core Ice lake /comet lake I3/I5/I7
Dimensions(mm)	【Width 324.5/ Depth 219/ Height 18.3(mm) / Weight 1.38(kg)】
LCD	14.1'' TN 1366*768 /FHD IPS 1920*1080
Memory/Storage	DDR up to 16G,storage up to 512G
Type of TP	N/A
Wireless LAN	802.11 B/G/N or AC
I/O Ports	1*Earphone 3.5mm, 1* DC charging, 1* Micro HDMI, 2*standard USB 3.0, 1*Micro SD , 1* type C optional
Camera	Front 0.3 or 2M
Battery& AC Adaptor	7.6V 6000mAh Battery, 19V/3A AC Adaptor
Selling point	<b>Full size keyboard/Narrow bezel/A case metal</b>
Price	<b>TBD</b>



# I151



## Product Specification

CPU	Intel core Ice lake /comet lake I3/I5/I7
Dimensions(mm)	【Width 374/ Depth 243/ Height 21(mm) / Weight 1.45(kg)】
LCD	15.6" FHD IPS 1920*1080
Memory/Storage	DDR up to 16G,storage up to 512G
Type of TP	Optional
Wireless LAN	802.11 B/G/N or AC
I/O Ports	1*Earphone 3.5mm,1* DC charging,1* Micro HDMI, 2*standard USB 3.0,1*Micro SD,1* type C optional
Camera	Front 0.3 or 2M
Battery& AC Adaptor	7.6v 5800mAh Battery, 19V/3A AC Adaptor
Selling point	<b>HDD/M.2 SSD support, with Fan, full size keyboard</b>
Price	<b>tbd</b>

# Smart Screen & Phonebook

## DR1561



*Private design & Best Seller!*

### Product Specification

Size	15.6'' FHD IPS
OS Support	EMUI, IOS, Android, Windows
Aspect Ratio	16: 10
Resolution	1920*1080 Pixels
Touch Screen	Film+Film, 10 point multi-touch
Speakers	Built 8Ω/1W Speaker * 4
I/O Ports	1* Charge Type C, 1* Type C with DP, 1* HDMI Port
Support	BT Keyboard, BT mouse
Battery & Adaptor	7.6V 5400mAh Battery, 12V/2A Type C Adaptor
Dimensions(mm)	【Width 359.7/ Depth 226.4/ Height 8.8(mm) / Weight 0.72(kg)】
Stand	Leather Case Holder
Selling point	<b>Slim, Battery and touch panel are optional</b>
Price	<b>TBD</b>

## DR14



*Private design*

### Product Specification

Size	14.1'' FHD IPS
OS Support	EMUI, IOS, Android, Windows
Aspect Ratio	16: 9
Resolution	1920*1080 Pixels,72% NTSC
Touch Screen	N/A
Speakers	Built 8Ω/1W Speaker * 2
I/O Ports	1* Charge Type C, 1* Type C with DP, 1* HDMI Port
Support	BT Keyboard, BT mouse
Battery & Adaptor	Without battery
Dimensions(mm)	【Width 359.7/ Depth 226.4/ Height 8.8(mm) / Weight 0.72(kg)】
Stand	Leather stand or any pen be used as stand
Selling point	<b>Untrathin design</b> <b>Support one cable transferring audio and video</b>
Price	<b>TBD</b>

## DR138



*Private design*

### Product Specification

Size	13.3" FHD IPS
OS Support	EMUI, IOS, Android, Windows
Aspect Ratio	16: 10
Resolution	1920*1080 Pixels,NTSC 72%
Touch Screen	G+FF, 10 point multi-touch
Speakers	Built 8Ω/1W Speaker * 2
I/O Ports	1* Earphone 3.5mm, 1* HDMI Port, 1* Micro SD slot 1* Charge Type C, 1* Type C with DP, 1* DC
Support	BT Keyboard, BT mouse
Battery & Adaptor	7.6V 5000mAh Battery, 12V/2A Type C Adaptor
Dimensions(mm)	【Width 307.5/ Depth 209/ Height 14.7(mm) / Weight 1.25kg】
Stand	Backlight keyboard
Selling point	<b>Yoga-like,backlight keyboard, battery and touch</b>
Price	<b>TBD</b>

## DR148



*Private design*

### Product Specification

Size	14.1" FHD IPS
OS Support	EMUI, IOS, Android, Windows
Aspect Ratio	16: 10
Resolution	1920*1080 Pixels,NTSC 72%
Touch Screen	G+FF, 10 point multi-touch
Speakers	Built 8Ω/1W Speaker * 2
I/O Ports	1* Earphone 3.5mm, 1* HDMI Port, 1* Micro SD slot 1* Charge Type C, 1* Type C with DP, 1* DC
Support	BT Keyboard, BT mouse
Battery & Adaptor	7.6V 5000mAh Battery, 12V/2A Type C Adaptor
Dimensions(mm)	【Width 307.5/ Depth 209/ Height 14.7(mm) / Weight 1.25kg】
Stand	Backlight keyboard
Selling point	<b>Yoga-like, backlightkeyboard, battery and touch</b>
Price	<b>TBD</b>

# Android Tablets WIFI only



## M809



### Product Specification

CPU	MT8167 Quad Core Cortex-A53 (MT8168 optional)
Dimensions(mm)	【Width 208.3/ Depth 124.4/ Height 9.6(mm) / Weight 0.5(kg)】
LCD	8" IPS 800*1280
Memory/Storage	DDR up to 2G,flash up to 64G
Type of TP	P+G/G+G
Wireless LAN	802.11 B/G/N or A/B/G/N
I/O Ports	1*Earphone 3.5mm, 1*HDMI,1*Micro SD, 1*micro USB
Camera	Front 0.3M/Rear 2.0M or 2.0M/5.0M
Battery& AC Adaptor	3.8V 4000mAh,5V 1.5A AC Adaptor
Selling point	<b>Slim and nice design</b>
Price	<b>TBD</b>

## M1009



### Product Specification

CPU	MT8167 Quad Core Cortex-A53 (MT8168 optional)
Dimensions(mm)	【Width 243.6/ Depth 172.2/ Height 8.8(mm) / Weight 0.6(kg)】
LCD	10.1" IPS 800*1280
Memory/Storage	DDR up to 2G,flash up to 64G
Type of TP	P+G/G+G
Wireless LAN	802.11 B/G/N or A/B/G/N
I/O Ports	1*Earphone 3.5mm,1*HDMI,1*Micro SD, 1*micro USB
Camera	Front 0.3M/Rear 2.0M or 2.0M/5.0M
Battery& AC Adaptor	3.8V 6000mAh,5V 1.5A AC Adaptor
Selling point	<b>Slim and nice design</b>
Price	<b>TBD</b>

# Android Tablets 4G LTE

## M706



### Product Specification

CPU	MT8765 Quad Core Cortex-A53 1.28g
Dimensions(mm)	【Width 244/ Depth 126.5/ Height 9.6(mm) / Weight 0.4(kg)】
LCD	7" TN/IPS 1024*600
Memory/Storage	DDR up to 2G,flash up to 64G
Type of TP	P+G/G+G
Wireless LAN	802.11 A/B/G/N
I/O Ports	1*Earphone 3.5mm, 1*HDMI,1*Micro SD, 1*micro USB,2*SIM
Camera	Front 0.3M/Rear 2.0M or 2.0M/5.0M
Battery& AC Adaptor	3.8V 2800mAh,5V 1.5A AC Adaptor
Selling point	<b>Slim and nice design,3500mAH battery .LTE support</b>
Price	TBD

## SC801



### Product Specification

CPU	Spreadtrum SC9863A CortexTM A55 MP8 , 1.6Ghz
Dimensions(mm)	【Width 213.4/ Depth 123.4/ Height 8.9(mm) / Weight 0.45(kg)】
LCD	8" IPS 800*1280
Memory/Storage	DDR up to 2G,flash up to 64G
Type of TP	G+P
Wireless LAN	802.11 A/B/G/N
I/O Ports	1*Earphone 3.5mm, 1*Micro USB2.0,1*Micro SD, 2*SIM card
Camera	2.0M+5.0M
Battery& AC Adaptor	3.8V 5100mAh,5V 2A AC Adaptor
Selling point	<b>5100mAh battery,metal case</b>
Price	TBD

## M1008



### Product Specification

CPU	MT8765 Quad Core Cortex-A53 1.28g
Dimensions(mm)	【Width 243.6/ Depth 172.2/ Height 8.8(mm) / Weight 0.6(kg)】
LCD	10.1" IPS 800*1280
Memory/Storage	DDR up to 3G,flash up to 64G
Type of TP	P+G/G+G
Wireless LAN	802.11 A/B/G/N
I/O Ports	1*Earphone 3.5mm, 1*HDMI,1*Micro SD, 1*micro USB
Camera	Front 0.3M/Rear 2.0M or 2.0M/5.0M
Battery& AC Adaptor	3.8V 5800mAh,5V 2A AC Adaptor
Selling point	<b>Narrow beael,Slim and nice design</b>
Price	<b>TBD</b>

## SC1001



### Product Specification

CPU	Spreadtrum SC9863A CortexTM A55 MP8 , 1.6Ghz
Dimensions(mm)	【Width 243.6/ Depth 163.2/ Height 8.8(mm) / Weight 0.6(kg)】
LCD	10.1" IPS 1200*1920
Memory/Storage	DDR up to 3G,flash up to 64G
Type of TP	Oncell
Wireless LAN	802.11 A/B/G/N
I/O Ports	1*Earphone 3.5mm, 1*Micro USB2.0,1*Micro SD, 2*SIM card
Camera	2.0M/8.0M
Battery& AC Adaptor	3.8V 6000mAh,5V 2A AC Adaptor
Selling point	<b>Narrow beael,Slim design,LTE support,metal case</b>
Price	<b>TBD</b>



# Thank you!

Email: [janny@cloverindustrial.com](mailto:janny@cloverindustrial.com)

Tel: +86 755-89583248

Mobie/wechat/what's app: +86 13590241359

Website: [www.cloverindustrial.com](http://www.cloverindustrial.com)