

2022
LOFRA
FURNITURE
CATALOGUE



LOFRA
GREEN INTERIOR

Interior Export & Home Design
Reputation-Quality-Price

133A DO XUAN HOP STREET, PHUOC LONG B WARD, THU DUC CITY, HCM CITY
noithatxanhlofra@gmail.com



MỤC LỤC

ABOUT US

2

VISION – MISSION – CORE VALUES

3

WHY CHOOSING LOFRA GREEN INTERIOR

4

ORGANIZATION CHAPTER

5

OUR COMMITMENT

6

FACTORY

7

MACHINERY AND EQUIPMENT

8

EXPORT COOPERATION PRODUCTS

14

OUTDOOR EXPORT PRODUCTS

23

PROJECTS IN DEVELOPMENT

29

ABOUT US

Lofra Green Interior Co., Ltd, formerly known as Kepler Cook Trading and Service Co., Ltd., was established on April 13, 2017, is a unit specializing in: Design consultancy, production of export furniture, supply of High-class kitchen equipment products imported from Europe, wood industry accessories and related accessories are reputable in Ho Chi Minh City and neighboring provinces.

With our capacity and enthusiasm, we are constantly innovating, producing high quality furniture products and becoming one of the leading enterprises in Vietnam in the field of consulting, design and construction. Design, construction and export of interior products.



VISION – MISSION – CORE VALUES

VISION

With our capacity and enthusiasm, we are constantly innovating, producing high-quality future products and becoming one of the leading enterprises in Vietnam in the field of consulting, design and construction. Design, construction and export of interior products.



MISSION

Always take the customer's experience as the focus, above all, we understand that the product made must be what the customer needs and wants, not only the design but also brings high value to the end-Users.



CORE VALUES

We always aim for the harmony between "Customers - Employees - Shareholders" with the motto

- Prestigious products, professional services, fast progress
- Dynamic and creative working environment
- Quality always comes first
- Price is competitive with the market



WHY CHOOSING US

With the desire to be a leading unit in the domestic and export furniture industry, we always care and understand the actual needs of our Customers.

Along with the advantage of modern production workshop, machinery and equipment and careful investment, we will help customers save maximum cost, time and effort.

QUALITY IS THE DIFFERENCE



Consulting support

Highly professional staff, knowledgeable in all styles will support customers with all problems and give the most suitable advice



The most economical cost

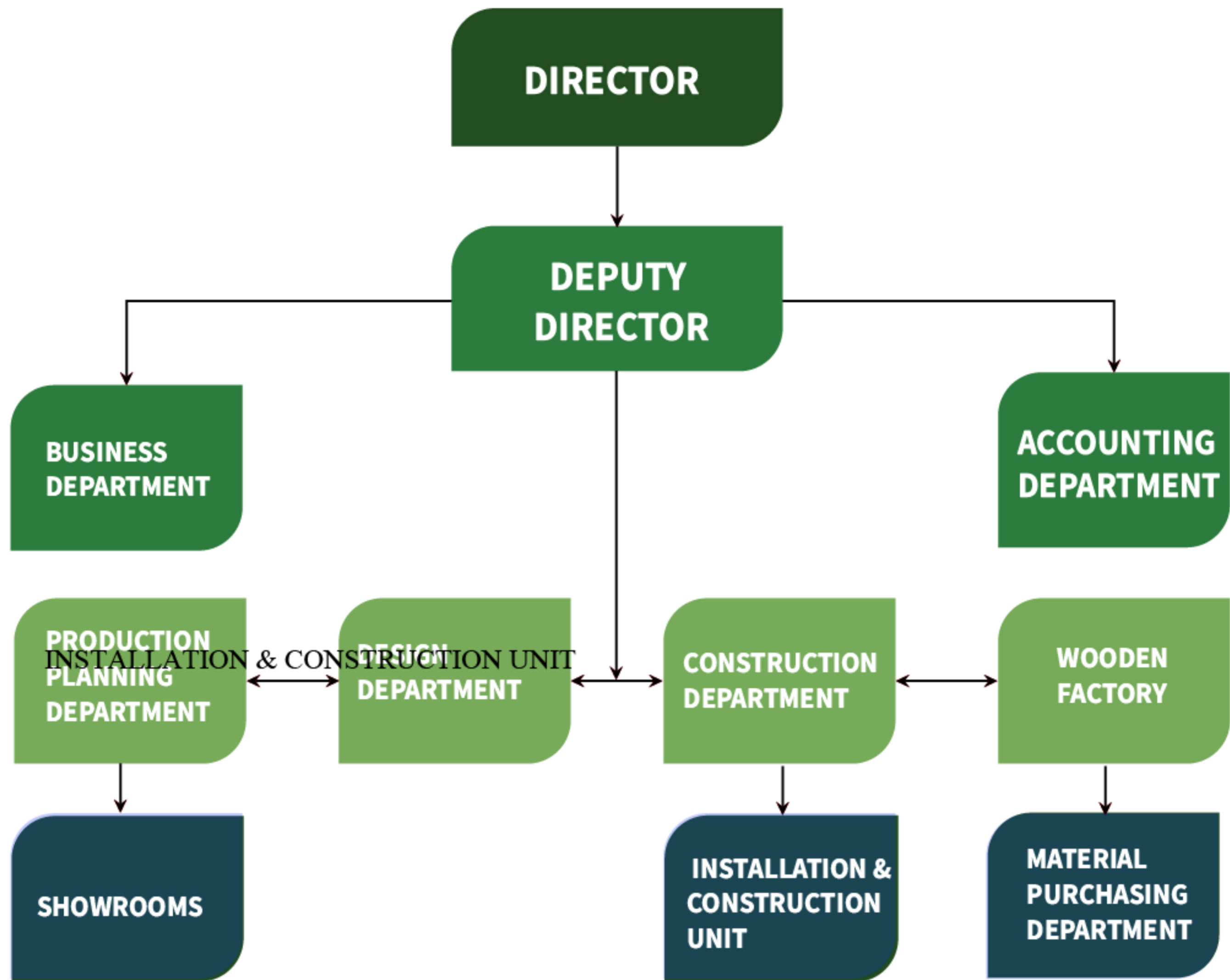
With the advantage of having a construction workshop and modern machinery, we will help customers maximize costs and save money compared to the market.



Prestigious quality service

The service is improved step by step and regularly to bring the most satisfied and genuine feeling to customers.

ORGANIZATION CHAPTER



OFFICERS AND EMPLOYEES TEAMS

The staff is enthusiastic, dedicated to the profession and always meets the best requirements of customers. In the future, in order to constantly and develop, the company will always expand and train potential young human resources

OUR COMMITMENT



With customers

Always keep credibility and have a friendly and respectful attitude to the Customers. Always listen and know how to balance the interests of customers and the company

Solidarity, respect for colleagues, always help when facing difficulties, always create a dynamic and creative working environment



With colleagues



With partners

Respect and cooperate in the spirit of mutual benefit. Keeping credibility, focusing on building the motto of mutual benefit and development together

Consider healthy competition as a synergy to develop business in a sustainable way



With competitors

FACTORY



LOFRA FURNITURE

Interior Expert & Home Design

Located at 39, No. 2 Street, Truong Tho Ward, Thu Duc City, with a workshop area of over 10,000m², Lofra factory always brings satisfaction to customers. With many years of dedication to the profession and a team of highly technical experts, the interior products are refined in every line, carefully on every drawing, skillful in every corner.

PROFESSIONAL CONSTRUCTION PROCESS



In order to be successful in manufacturing, the process is the key factor. Lofra has put in the place a strict monitoring process, through which it can ensure the progress and completion time of its products

We are always committed to handing over the products **ON SCHEDULE** as agreed in the contract. Any customer can feel our **DEDICATION** and **ENTHUSIASM**

MACHINERY AND EQUIPMENT



IMPROVE **COMPETITIVENESS** AND **PRODUCTION**

BENEFITS THE **MODERN TECHNOLOGY** PRODUCTION PROCESS FROM

CONTINUOUSLY **INNOVATION** AND IMPROVE **QUALITY**

MEET **PROGRESS** AND **QUALITY** WITH THE HARDEST REQUIREMENTS



LIST OF MACHINERIES



CNC horizontal drilling machine uses infrared to determine the center of the side hole, automatically recognizing the hole to be drilled

Horizontal Drilling Machine

- Motor speed: 18000 rpm
- Voltage: 380V/ 50hz
- Air pressure: 0.8Mpa
- Motor power: 2.2kw
- Dimensions: 3200mm x 1060mm x 1360mm
- Weight 1050kg



LOFRA FUNITURE

Interior Export & Home Design



LIST OF MACHINERIES



CENTER CNC MACHINE

- Movement speed: 60m/min
- Total power: 25Kw
- Spindle speed: 18000 - 24000 rpm
- Voltage 380V/50hz
- Vacuum machine: 11KW
- Barcode printer included

Produced according to ISO 9001 – 2015 standards



LOFRA FURNITURE
Interior Export & Home Design

www.noithatxanhlofra.com

noithatxanhlofra@gmail.com



MULTIFUNCTION EDGE SEALING MACHINE

- Workpiece drying - Straight edge milling
- Bevel cutting - Flat gluing - Splint slitting & splinting - Paste the side profile - cut the tail end - Fix the edge
- Edge scraping - Spray polishing solution

- Total power: ~20Kw
- Feeding speed: 12 - 20m/mim
- Weight: 4000kg
- Straight edge paste
- Trim excess splint head and tail
- Round Square Edge and 45 degree side



LIST OF MACHINERIES



Sliding table saw machine imported from Europe

- Maximum tilt angle: 45 degrees
- Shaft rotation speed: 4000 -5200 rpm
- Slitting saw shaft speed: 8000 rpm
- Dust collection system on 1 set Machine weight: 1000 kg
- Dimensions: 3250mm x 3200mm x 980mm

Desk top 3m², working width 41cm
Producing 100% unadulterated cast iron



LOFRA FUNITURE
Interior Export & Home Design

www.noithatxanhlofra.com

noithatxanhlofra@gmail.com



2 ROWS DRILLING MACHINE

- Total number of drill shafts 42 pieces
- Specification of drill foot 10mm
- Pressure when compressing 0.6 - 0.8 Mpa
- Drill shaft rotation speed 2840v/p
- Machine weight 550kg
- Max machining size: 1800mm x 640mm
- Min machining size: 120mm x 32mm

The machine uses a touch screen, displays the position of the drill assembly electronically



LIST OF MACHINERIES



Produced according to ISO 9001 – 2015 standards

VERTICAL SAW MACHINE

- Diameter of flywheel: 600mm
- Flywheel width: 50mm
- Flywheel rotation: 365 rpm
- Saw blade length: 4490mm
- Dimensions: 1110mm x 740mm x 2150mm
- Weight: 560 kg



Produced according to ISO 9001 – 2015 standards

SANDING MACHINE

- Machining size: 630 mm
- Shaft speed: 18.5m/s
- Conveyor speed: 6-25m/mim
- Power: 20.55Kw
- Machine size: 1750mm x 1200mm x 1900mm
- Weight: 1400kg



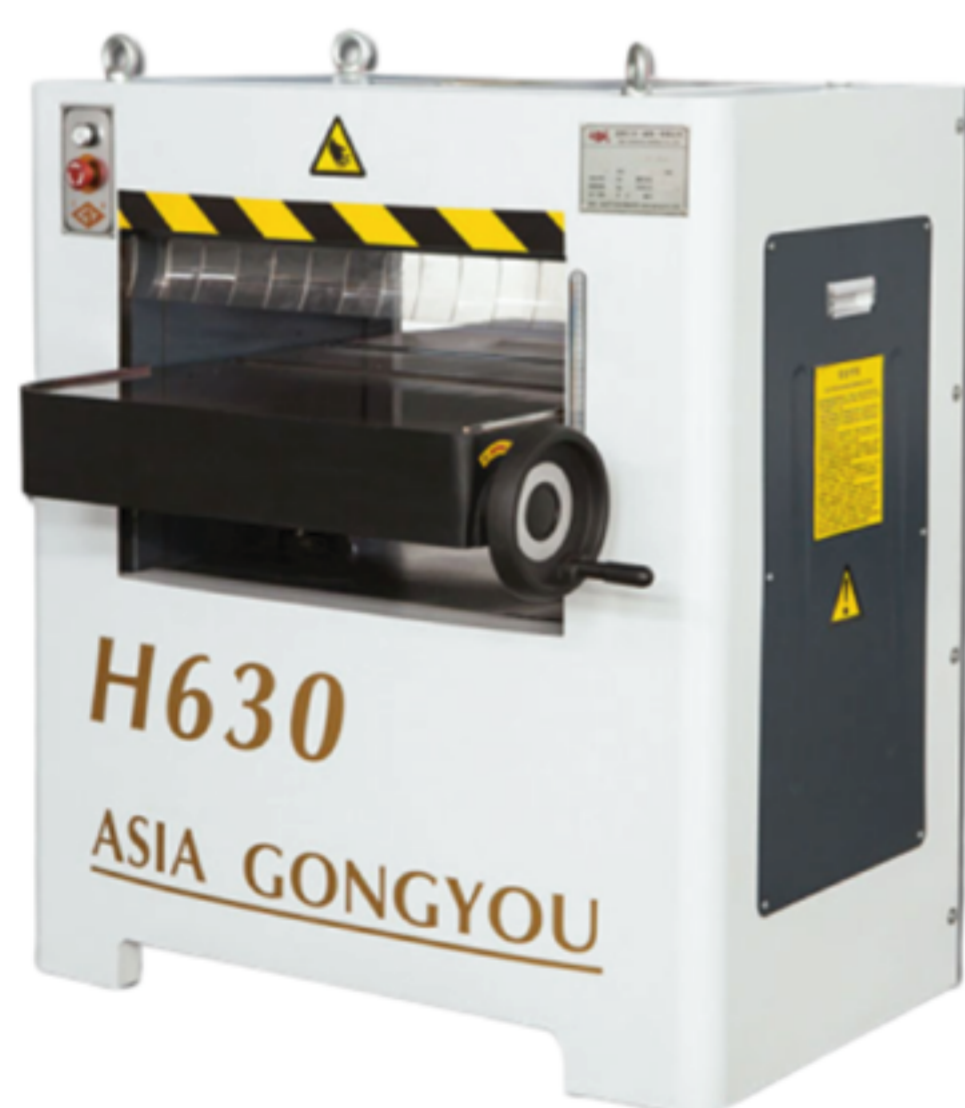
DANH MỤC CÁC LOẠI MÁY MÓC



WOOD PLANING MACHINE

- Spindle speed: 5600rpm
- Rotation speed: 2000 rpm
- Power: 2.2 - 3Kw
- Cutting diameter: 87mm - 102mm
- Dimensions: 2200mm x 790mm x 1100mm
- Weight: 390kg.

Produced according to ISO 9001 – 2015 standards



WOOD PLANING MACHINE

- Maximum width: 630mm
- Maximum planing thickness: 200mm
- Maximum planing depth: 5mm
- Spindle speed: 5500 rpm
- Diameter of knife shaft: 105mm
- Dimensions: 1053mm x 849mm x 1143mm
- Weight: 495kg

Produced according to ISO 9001 – 2015 standards



DANH MỤC CÁC LOẠI MÁY MÓC



WOODWORKING MILLING MACHINE

- Number of revolutions: 10000/8000/6000
- Shaft diameter: 35mm
- Minimum simulation radius: 45mm
- Working platform height: 800mm
- Dimensions: 1630mm x 690mm x 944mm

Produced according to ISO 9001 – 2015 standards



LOFRA FUNITURE
Interior Export & Home Design

www.noithatxanhlofra.com

noithatxanhlofra@gmail.com



LATHE

- Maximum width: 630mm
- Maximum planing thickness: 200mm
- Maximum planing depth: 5mm
- Spindle speed: 5500 rpm
- Diameter of knife shaft: 105mm
- Dimensions: 1053mm x 849mm x 1143mm
- Weight: 495kg

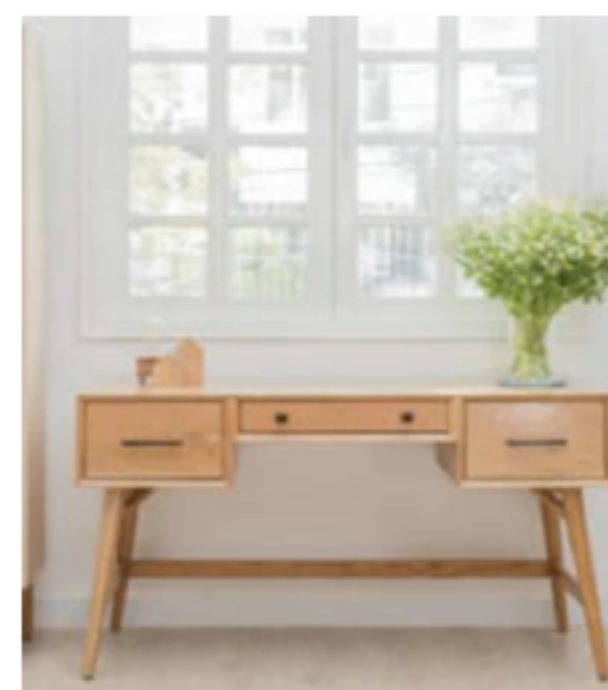
Produced according to ISO 9001 – 2015 standards



LOFRA FURNITURE
Interior Export & Home Design



EXPORT COOPERATION PRODUCTS



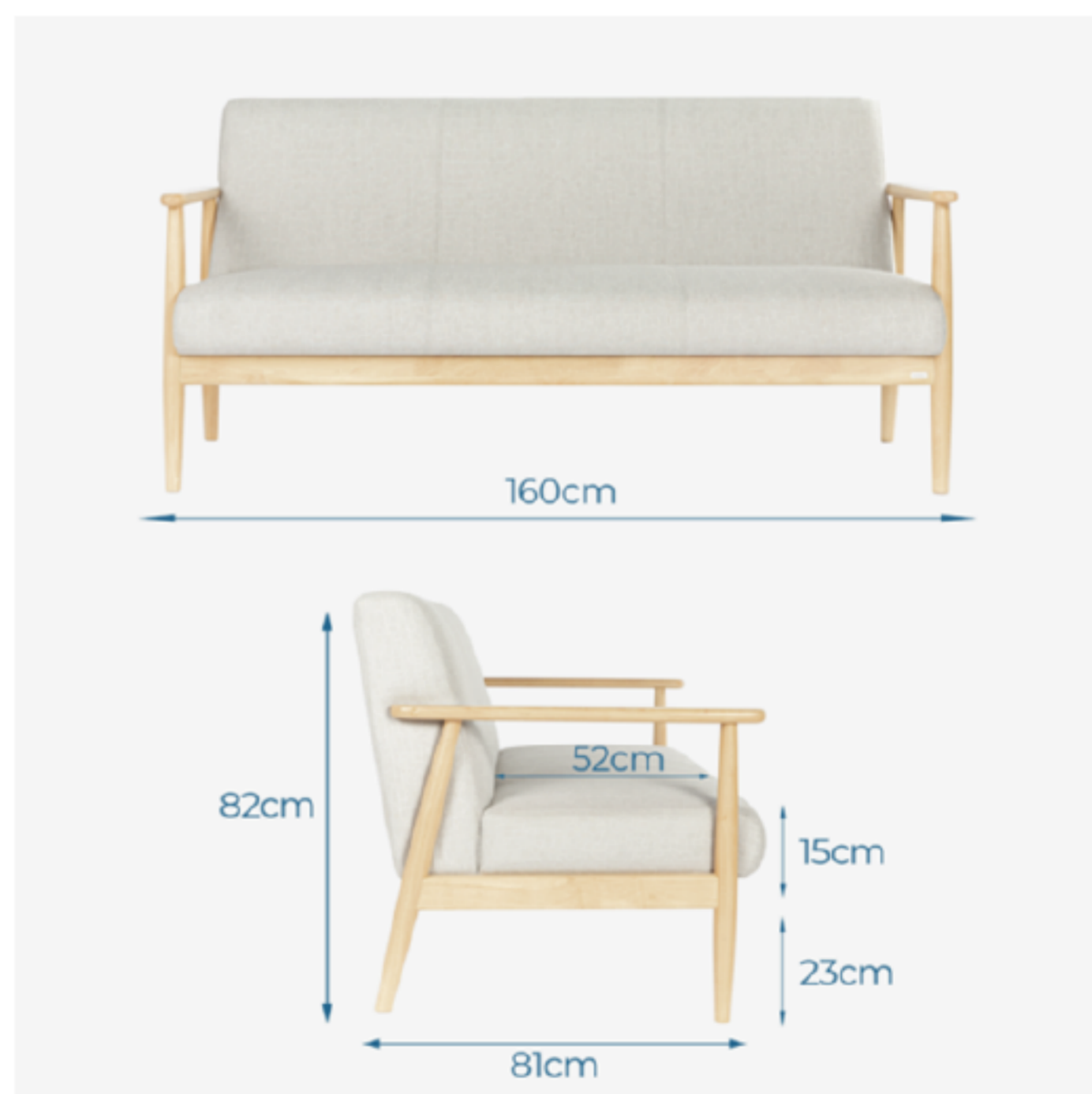
MILAN 901 NATURAL RUBBER SOFA



Natural rubber anti-impact, good bearing.

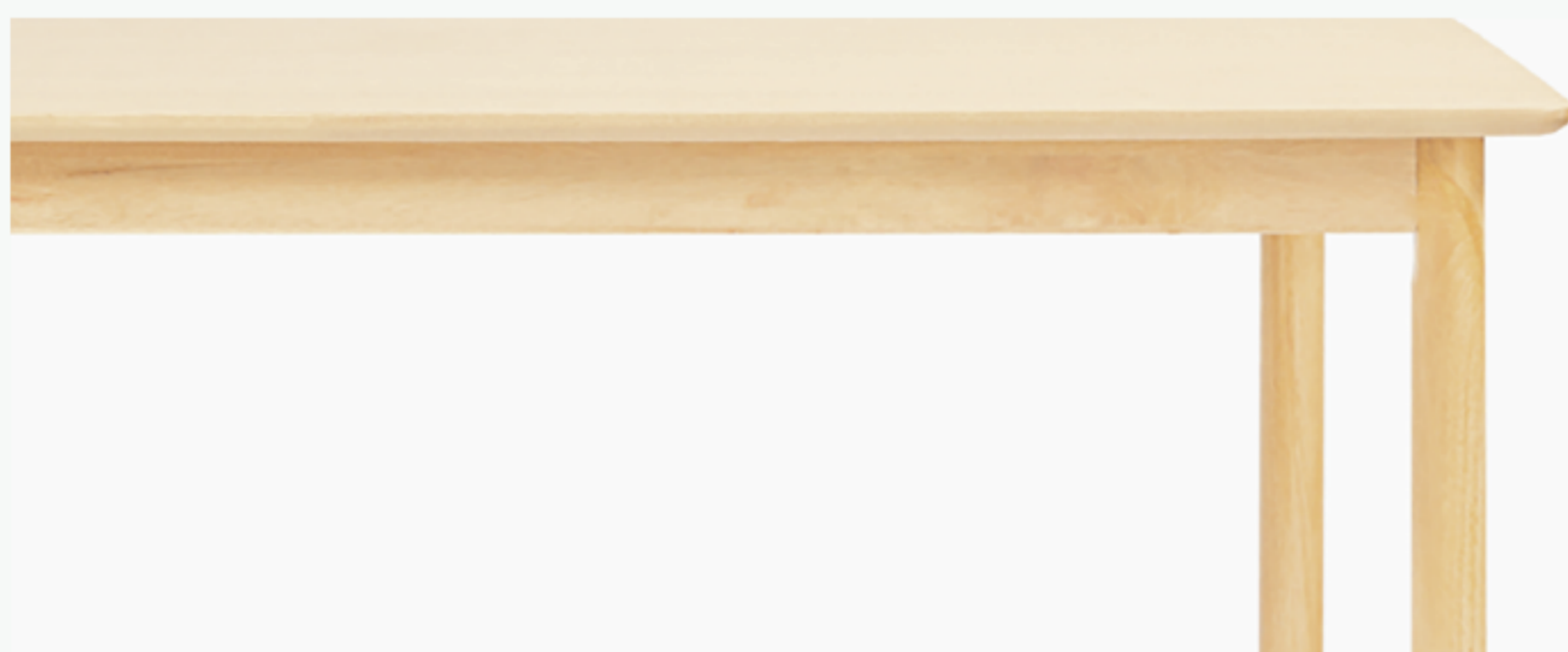


Anti-wrinkle polyester fabric, resistant to dirt and mildew, easy to clean.



Standard size: 1600mm x 810mm x 820mm

MILIAN MULTI-CHAIR MIXING TABLE SET



The edge of the table is beautifully curved to every detail, effective and safe to use



Natural oak veneer table top NC paint waterproof, easy to clean.



Using industrial wood, CARB-P2 certified, Absolutely safe for health

2 MININ SOFA TABLES SET



Kết cấu chắc chắn, thiết kế bo tròn
Chịu lực tốt

Exquisite design, minimalist design with trendy gray tones
helps the design to harmonize with all living rooms



The table top is coated with NC technology,
helping the product to have a shiny surface
and durable color over time



Using industrial wood,
CARB-P2 certified, Absolutely safe for health

TEA & COFFEE LIVING ROOM
DECORATION TABLE



*Edge edge aesthetic, anti-spill
when pouring water*



*Spacious desk drawer,
comfortable to clean*



*Delicate lines,
highly waterproof oak veneer*



*Rubber wood legs are sure to bear 100% force.
High durability properties over time*



*Using industrial wood,
CARB-P2 certified. Absolutely safe for health*

EXPORT TV MILAN SHELF



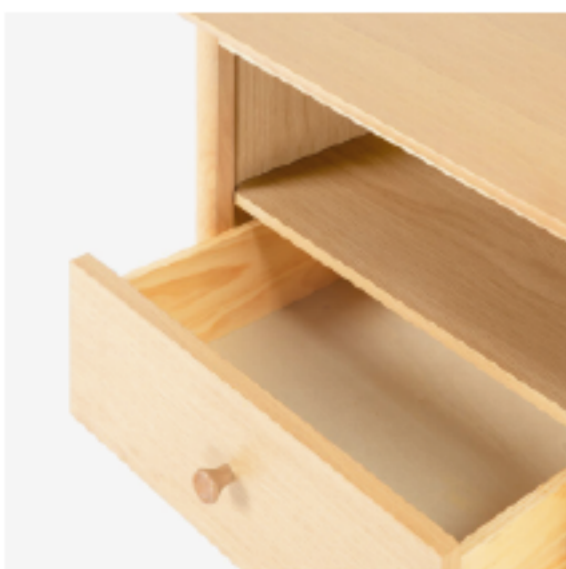
*Aesthetically designed electric hole,
Smooth, glossy UV painted surface*



*High-grade IVANS hinge
is durable over time*



*Wooden knobs,
natural hand-finished*



*Spacious drawers for easy storage.
Ray pull gently, no noise*



*Using industrial wood,
CARB-P2 certified. Absolutely safe for health*

DOUBLE TEA TABLE FOR NORTH EUROPE EXPORT



*High quality MDF, melamine coated.
Nordic style glossy white PU paint.
Convenient 2-tier design, comfortable storage space.*



*Using industrial wood, CARB-P2 certified.
Absolutely safe for health*



Standard size: 1000mm x 500mm x 430mm

**MULTI-FUNCTION RUBBER WOOD
WORKING TABLE**



Bàn Cafe gỗ cao su xuất khẩu

- Production by line technology
- High accuracy.
- Homogeneous product

***South Korea style folding table
for export***

- Design in modern style
- Folds up easily when not in use
- Save the ruins



Annual export products



 Milian TV largeside board



Multi-storey office cabinets-APC 




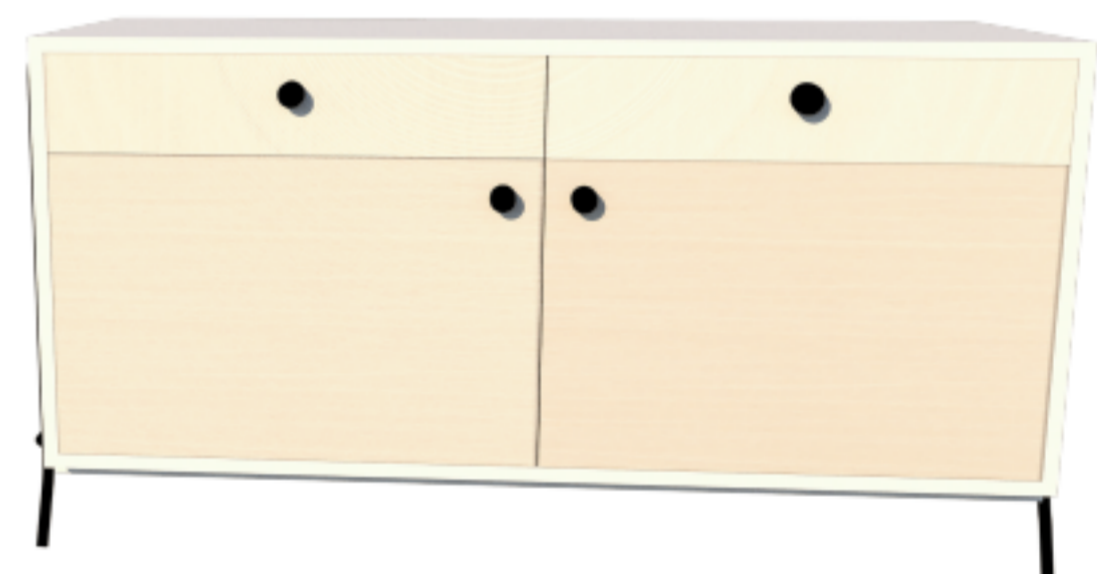
 Milian coffee table




Office cabinets - APC 



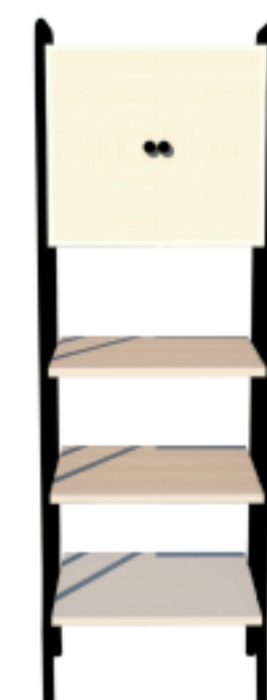
 Milian TV smallside board




Manager's desk - APC 



 Milian tall cabinet



Cabinet with 2 drawers - APC 



OUTDOOR EXPORT PRODUCTS



Garden tea table
Material: Natural Melaleuca
Quantity: 10cont/month



Outdoor wooden table & chairs
Material: Natural Melaleuca
Quantity: 10cont/month



Outdoor rocking chair
Material: Natural Melaleuca
Quantity: 10cont/month

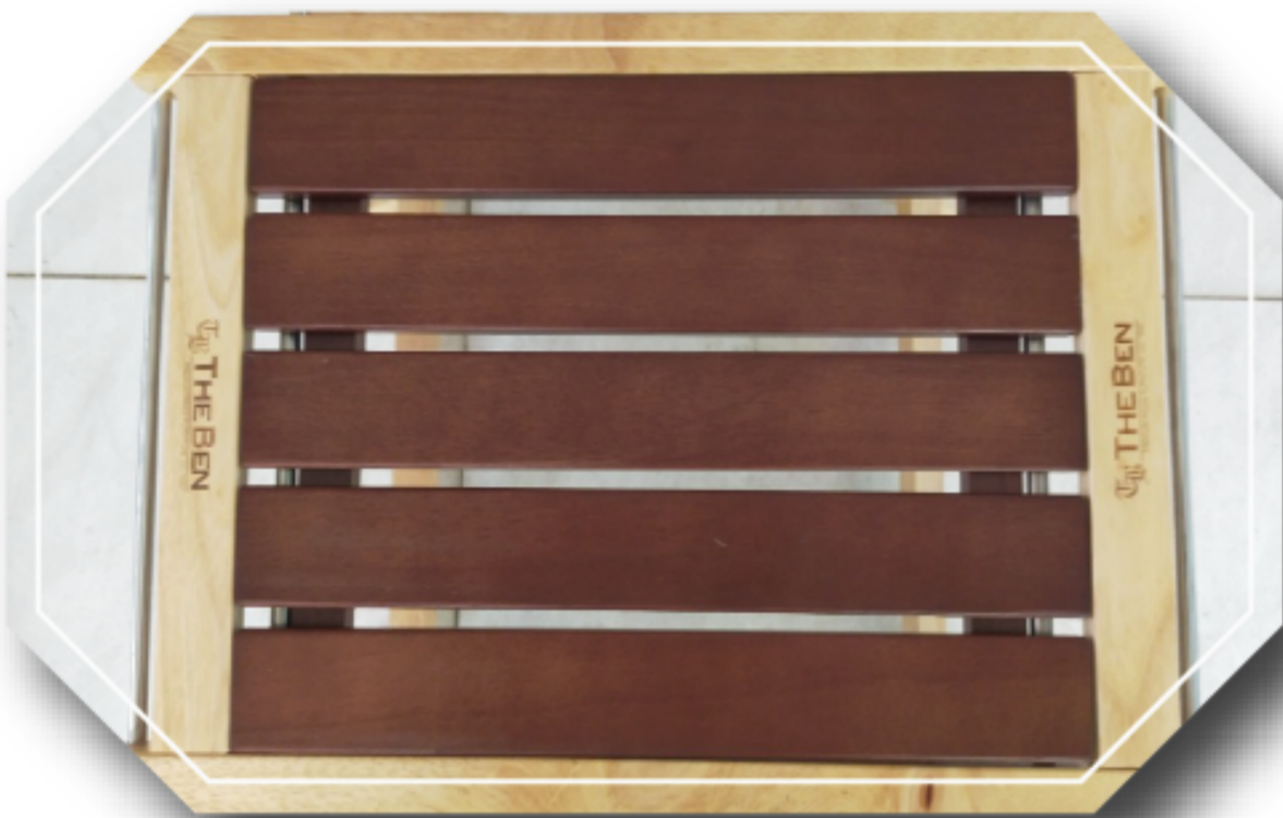
OUTDOOR EXPORT PRODUCTS



For more than 4 years of operation, with a high sense of responsibility and enthusiasm, competitive prices and satisfaction for many customers, that's why Lofra is always trusted and chosen by customers. Leading partners of large companies and corporations

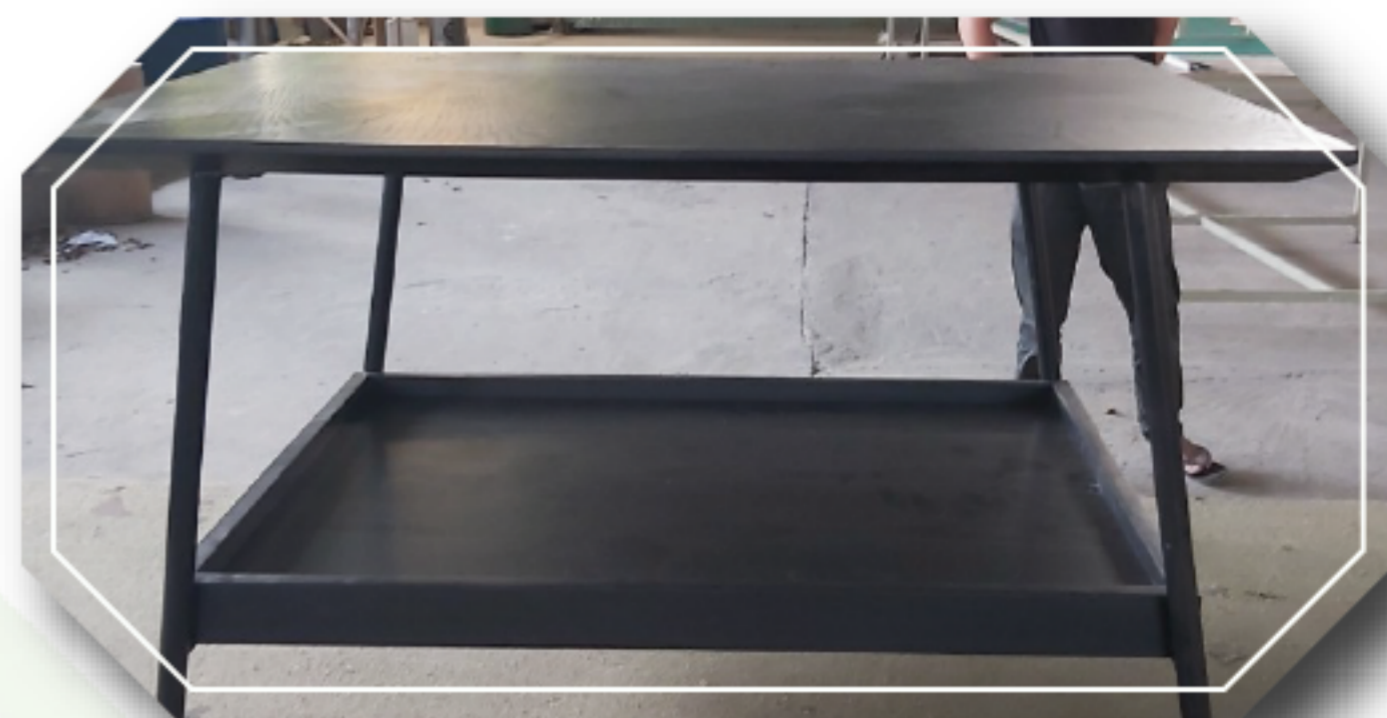
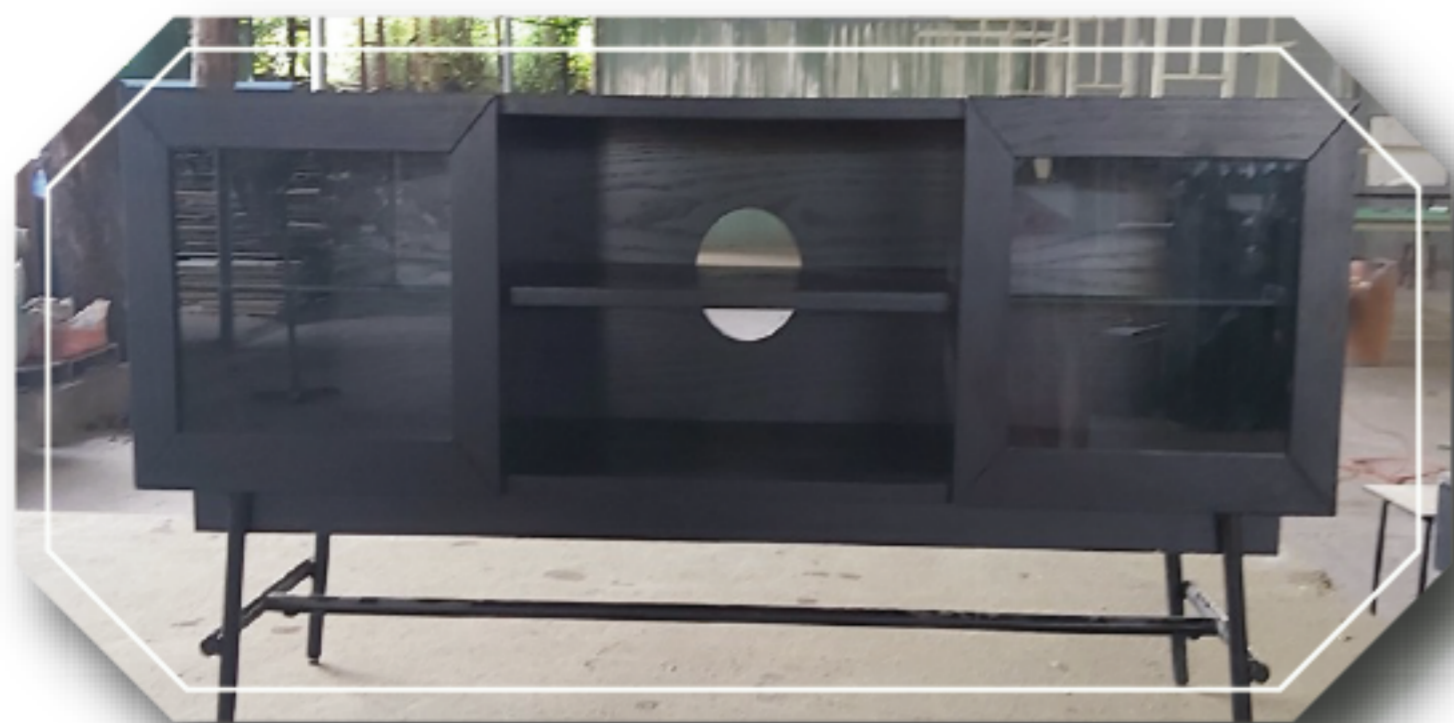
COOPERATION WITH US

TEA - COFFEE – ROLLING TABLE FOR KOREA EXPORT



*Collaborator: Shueng Hyun Co., Ltd

MILIAN TABLE COFFEE FURNITURE SYSTEM



Cooperating unit: Thanh Ngoc Import-Export Co., Ltd

AN PHAT CUONG FURNITURE SYSTEM



Cooperating unit: An Phat Cuong join stock company

ACTIVITIES AT THE WORKSHOP





CONTACT US

(084)-903-055-065

www.noithatxanhlofra.com

133A DO XUAN HOP STREET, PHUOC LONG B WARD, THU DUC CITY, HCM CITY



LOFRA FUNITURE

Interior Export & Home Design

PERFECT QUALITY – ELEVATE THEIR STYLE



LOFRA GREEN INTERIOR CO., LTD

ADDRESS: 133A DO XUAN HOP STREET, PHUOC
LONG B WARD, THU DUC CITY, HCM CITY

Hotline: 0903 055 065

Email: noithatxanhlofra@gmail.com

 www.noithatxanhlofra.com

 noithatxanhlofra@gmail.com